



Vision 2017





Why Plan?

- Preparing for The Rotary Foundation Centennial
- Immense growth
- Relevance in philanthropic world
- Evolving organization
- Rotarian feedback
- Sustainability, significance, simplification





Rotarian Feedback

- **Simplify** and **focus** program menu
- **Balance** — global and local
- Focus on **significant** and **sustainable outcomes**
- Increase sense of ownership — **shifting decisions locally**
- Be recognized as **first-choice partner** for global projects





Future Vision is a ...

- strategic plan
- new grant-making model
- building on success with programs
- alignment of projects and activities
- new committee structure





Rotary Foundation Motto & Mission

Doing Good in the World

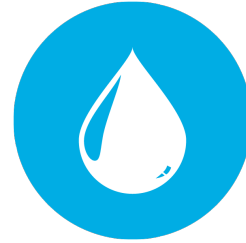
...to enable Rotarians to advance world understanding,
goodwill, and
peace through the improvement of health, the support of
education, and
the alleviation of poverty.

COL Endorsed, April 2007



Areas of Focus

- Basic Education and Literacy
- Disease Prevention and Treatment
- Economic and Community Development
- Maternal and Child Health
- Peace and Conflict Prevention/Resolution
- Water and Sanitation





Grant Names

Rotary Foundation
District Grants

Rotary Foundation
Global Grants





Rotary Foundation District Grants

- Simple, flexible, innovative
- Projects that support Foundation's mission
- Single "block" grant awarded annually
- Smaller activities and projects
- Fund both local or international activities
- Local decision making with broader guidelines





Rotary Foundation Global Grants

- Long-term projects
- Larger grant awards
- Sustainable outcomes
- Relate to Areas of Focus
- World Fund support
- Both *club- and district-developed* and *packaged*





The Rotary Foundation's Principles of Sustainability for Global Grants

- continuity
- On multiple levels
- with local resources, regional input, indigenous knowledge.
- avoid deterioration or destruction of the local environment.
- greatest appropriate number of beneficiaries prepare scholars and contribute to new and innovative methods
prepare participants to increase impact and improve effectiveness
- utilize grassroots individuals



Examples of Activity

District Grants Relate to TRF Mission

- Districts exchange teams of professionals not working in fields related to areas of focus (traditional GSE)
- International travel for local doctor to volunteer at a clinic
- Scholarship for student to attend local or international university (traditional scholar)
- Donating art supplies to assist youth after-school program
- Send ShelterBox containers in response to natural disaster in another district



Examples of Activity

Global Grants Relate to Areas of Focus

- International safe drinking water, sanitation, and hygiene education project
- Send scholar abroad to enroll in water engineering degree program
- International malaria project to distribute bed nets and malaria treatments
- Send vocational training team abroad to participate in workshop and learn teaching methods to address adult illiteracy



Rotary International/The Rotary Foundation

**Foundation Areas of Focus
Global Grants — Packaged Opportunities**

Districts/Clubs

*Financial and/or
Human Resources*

Strategic Partners

Financial Resources

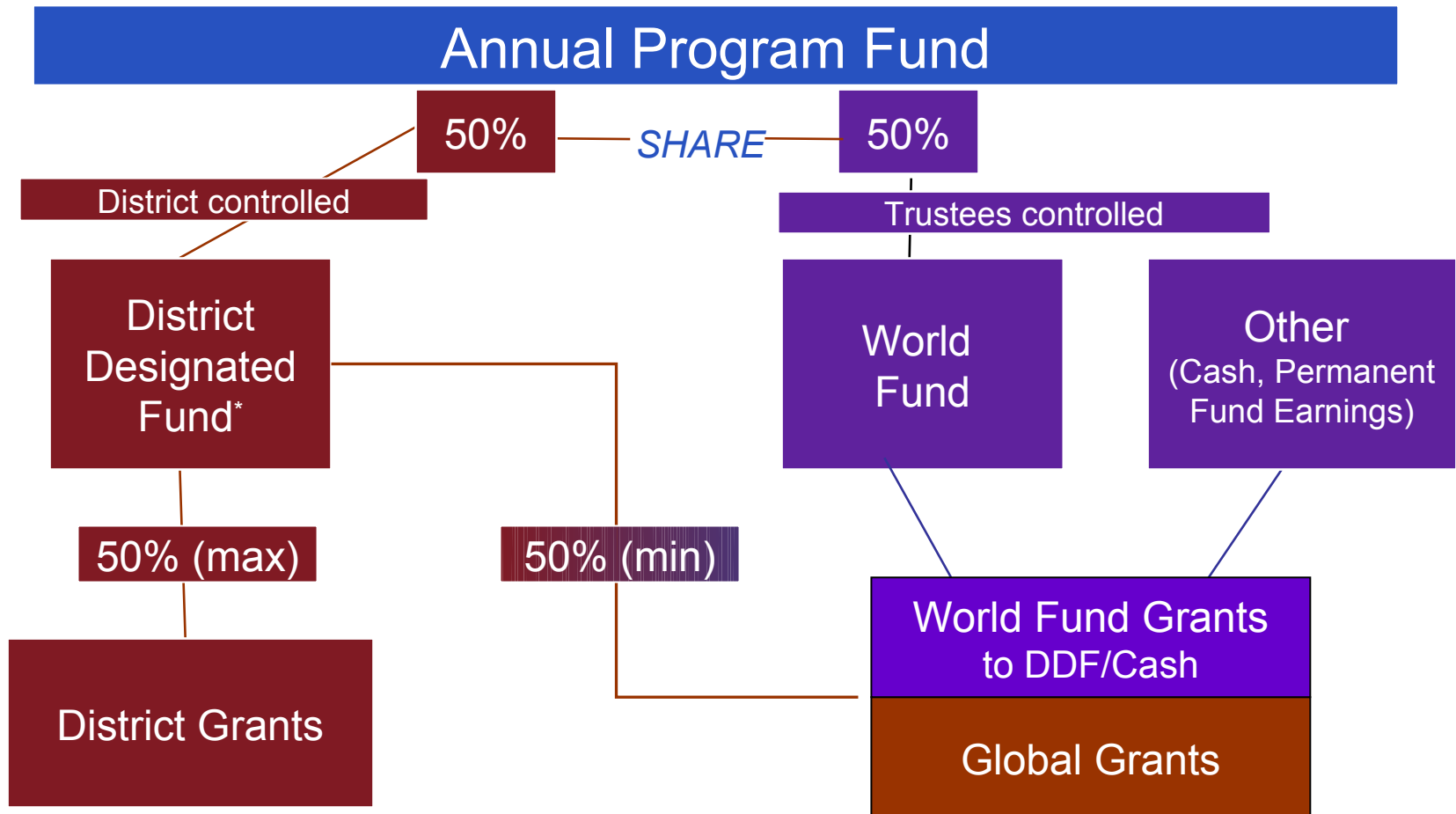
Technical Expertise

Advocacy

Community

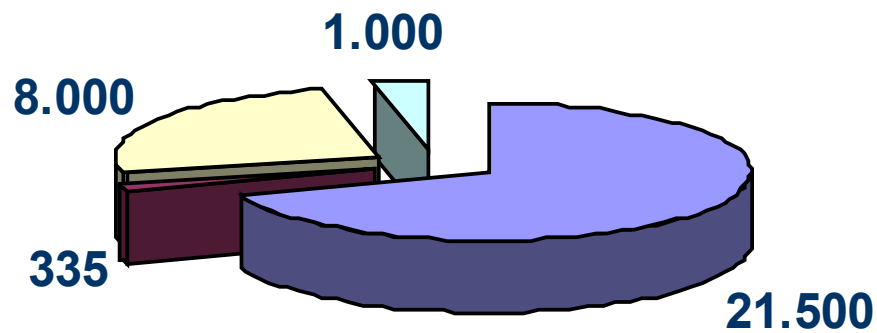


Funding Model





Humanitäres Programm Budget 2010-11 World Fund in T\$



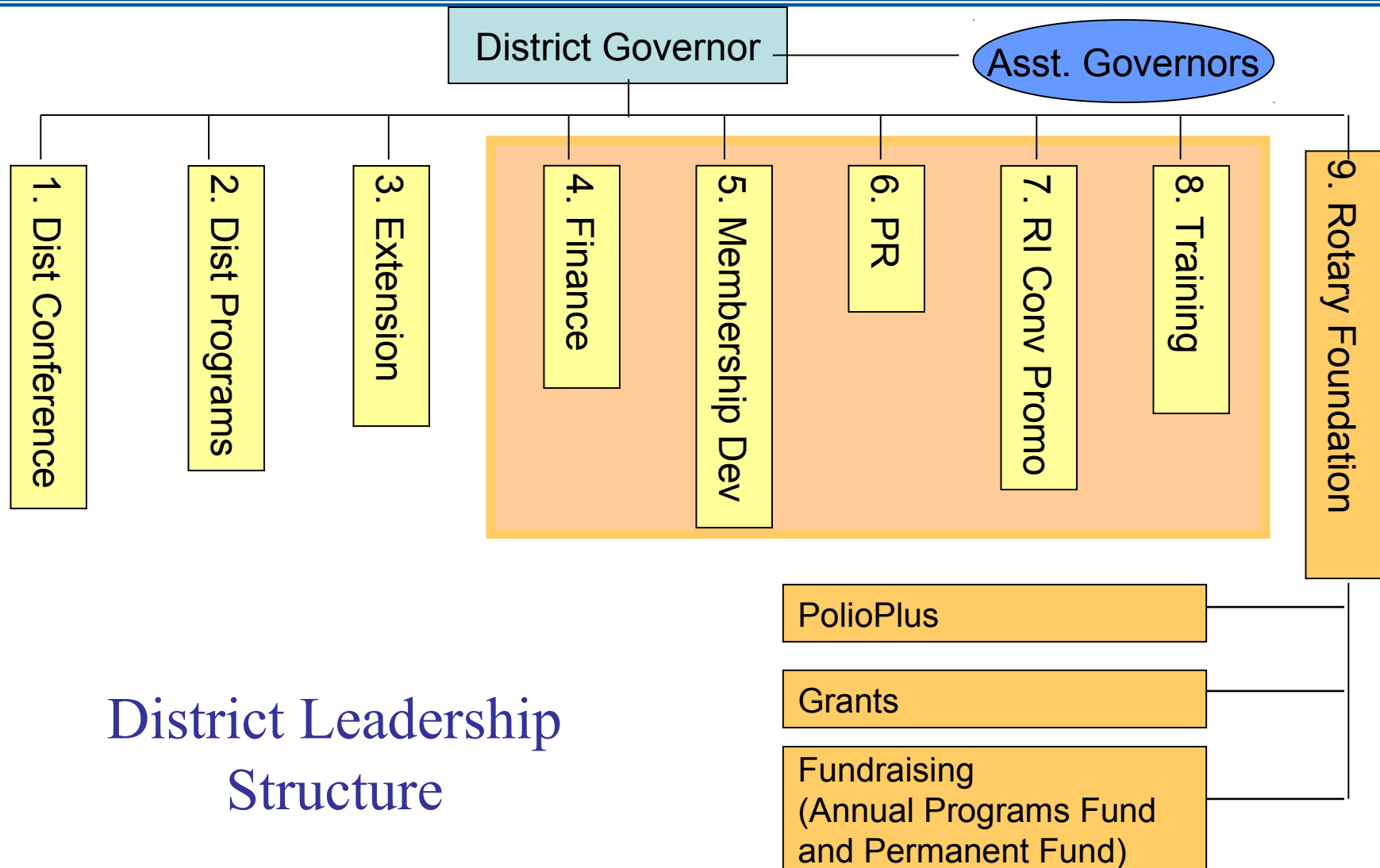
- Matching Grant
- 3 H
- Global Grants Club und Distrikt
- Global Grants packaged



Qualification

- Clubs and districts will be qualified to receive Rotary Foundation funds
- Qualification process is simple
- Ensures proper legal, financial, and stewardship controls of grants
- Districts will be trained to qualify their clubs
- Pilot districts qualified in 2009-10
- All districts qualified in 2012-13



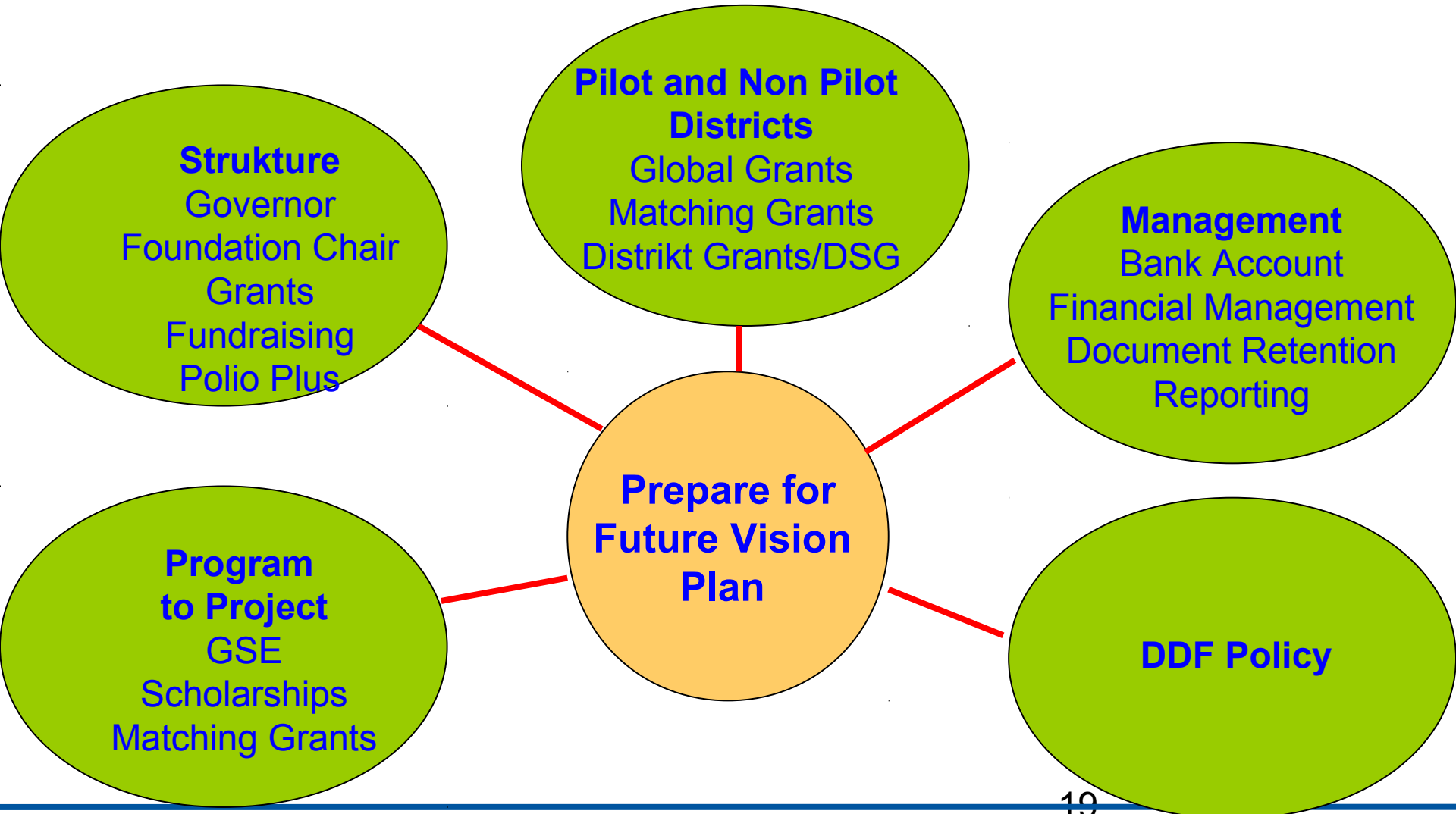


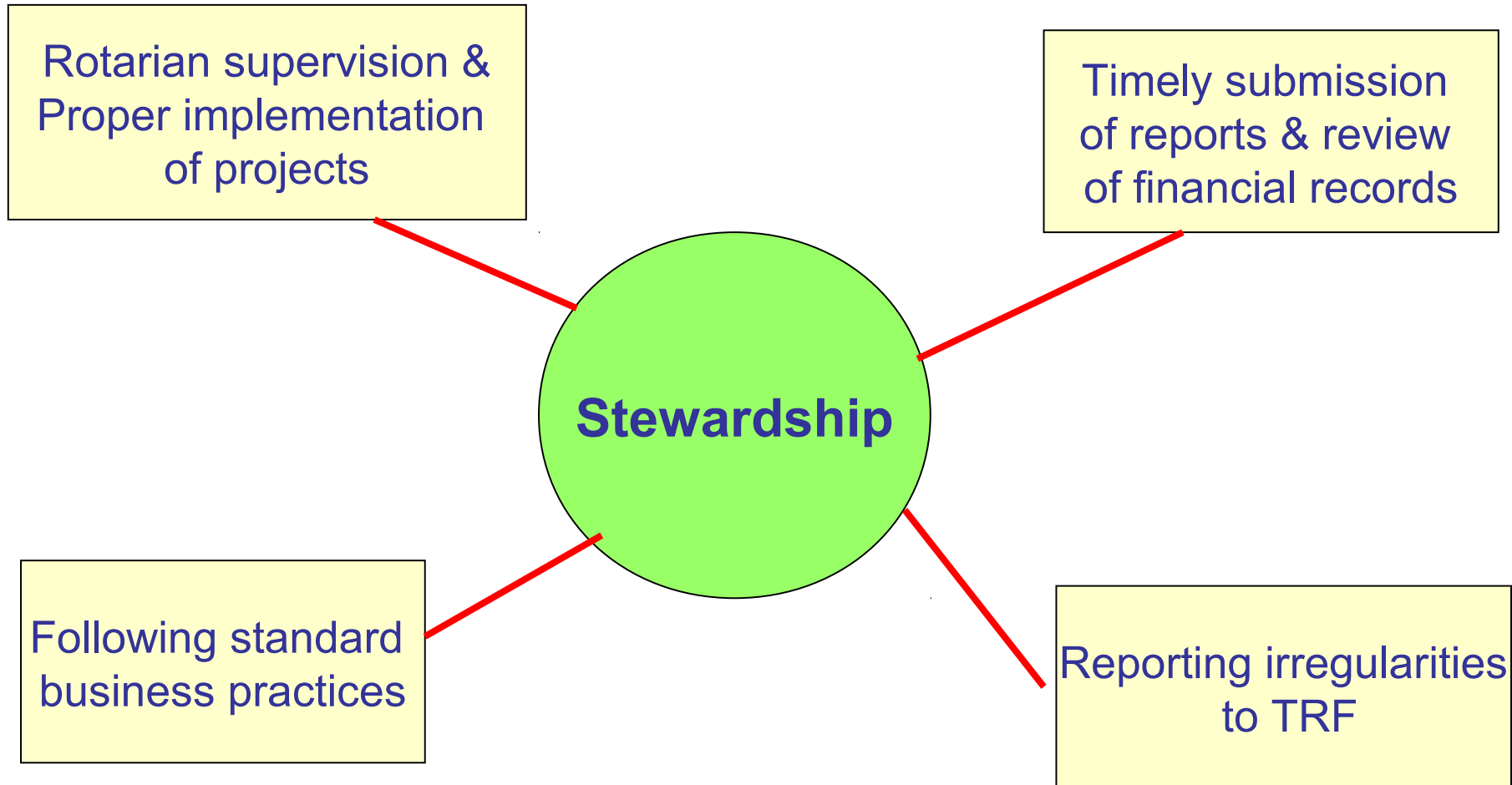
District Leadership Structure



Timeline

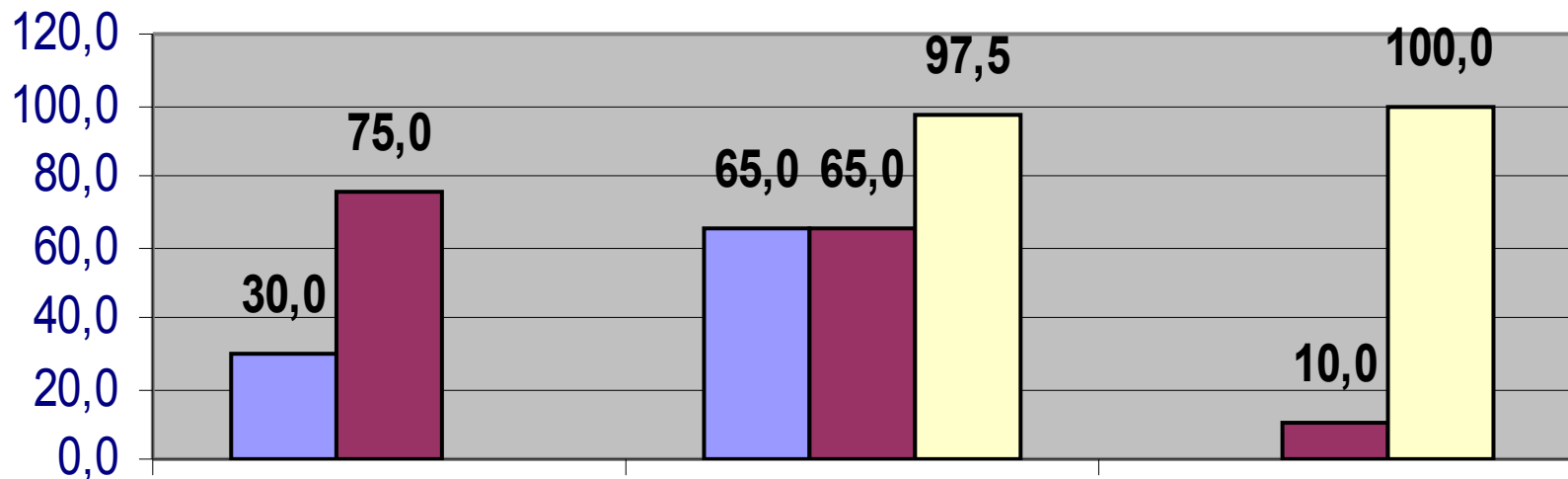








Future Vision Plan: 16 Projekte 95 T\$ Clubs, 150 T\$ DDF, 198 T\$ World Fund, zusammen 443 T\$



9 District Grants

6 Global Grants/Club/District

1 Global Grant packaged

Club	3,33
DDF	8,33
Projekt	11,66
Förderquote	3,5

■ Clubs ■ DDF □ World Fund

Club	10,83
DDF	10,83
Worldfund	16,25
Projekt	37,91
Förderquote	3,5



“It is well that there is nothing in Rotary so sacred that it cannot be set aside in favor of things better.... Rotary simply must continue to pioneer or be left in the rear of progress.”